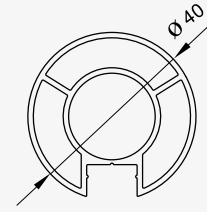
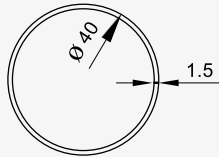
**BLS-100**

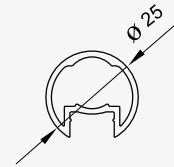
لوله ۵۰ . Pipe 50
0.618 kg/m

**BLS-101**

لوله ۴۰ . Pipe 40
0.745 kg/m

**BLS-102**

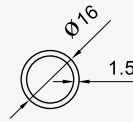
لوله ۴۰ . Pipe 40
0.489 kg/m

**BLS-103**

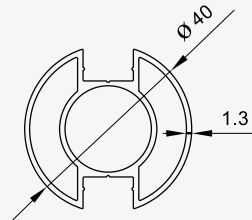
لوله ۲۵ . Pipe 25
0.370 kg/m

**BLS-104**

پروفیل درپوش پیچ . Profile Of Screw Cap
0.81 kg/m

**BLS-105**

لوله ۱۶ . Pipe 16
0.184 kg/m

**BLS-106**

لوله ۴۰ . Pipe 40
0.721 kg/m

